









N 1/4 Cor. Sec. 16 T. 32 R. 23

Con. Mon. Up 6"  
Replaced Con. Mon. with Cast Iron Monument & flush. Sign post and warning sign 1' ± North.  
June 10, 1975  
D. Dahl  
B. Sannerud  
G. Adams

NAIL & WASHER  
8" TW. BIRCH  
TIE CHECK  
July 11, 1984  
G. Lips  
D. Bross  
R. Bennett

N&W  
10" Black Oak

TEMPERATURE CORRECTED  
AND HORIZONTALLY  
TAPED MEASUREMENTS

Nail & Washer  
P.P.

MICROWAVE  
CABLE DISH 35.53

Tie Check  
7-21-66  
B. Rogers  
J. Berry  
R. Smith

26.06  
23.00

Nail & Washer  
9" Oak

4" Black Oak  
New Nail & Washer  
in 8" Black Oak

6/10/60 Retie 7/21/64 Temp. 70° F.

Bill Rogers M.D. Anderson  
Ralph Robinson R. Carlson

Tie Check  
June 12, 1978  
D. Dahl  
B. Stephens  
M. Kisrow

ROLAND W. ANDERSON  
COUNTY SURVEYOR  
ANOKA COUNTY, MINNESOTA

Sign post and warning N 1/4 Cor. Sec. 16 T. 32 R. 23  
1' ± North

Con. Mon. Up 6"  
I.P. on N Side

Replaced  
Con. Mon.  
with cast iron  
mon. flush  
6/10/75

D, Dahl  
B, Sannerud  
G, Adams

N&W  
10" Black Oak

N&W  
8" Tw. Birch

TEMPERATURE CORRECTED  
AND HORIZONTALLY  
TAPED MEASUREMENTS  
P.P. N+W,

Tie Check  
7-21-66  
B. Rogers  
J. Berry  
R. Smith

26.06  
23.00

New N+W in  
8" Black oak  
Temp. 70° F.

6/10/60 Retie 7/21/64

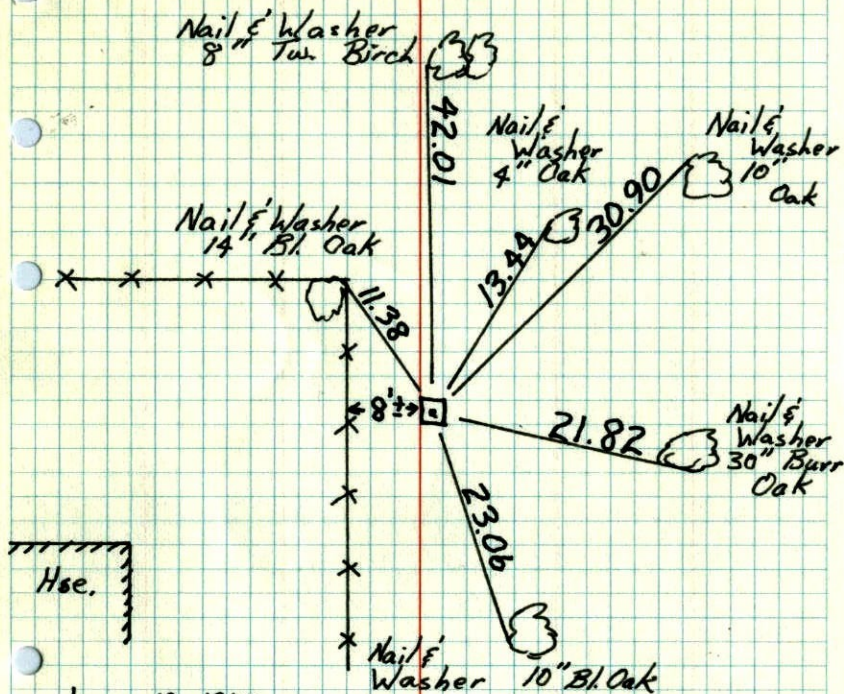
Bill Rogers M.D. Anderson  
Ralph Robinson R. Carlson

ROLAND W. ANDERSON  
COUNTY SURVEYOR  
ANOKA COUNTY, MINNESOTA



N 1/4 Cor. Sec. 16-T32-R23

Concrete Monument  
4p 6"



June 10, 1960

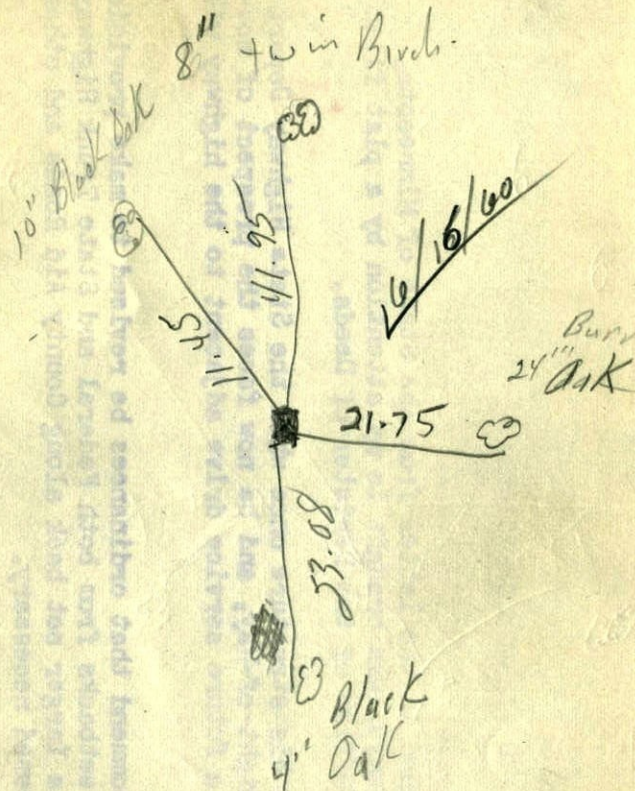
Bill Rogers  
Ralph Robinson

The Check  
June 14, 1971  
R. Brien  
J. Boettcher  
& Olson

6/10/60

N 1/4 Cor. Sec. 16 + 32 R23

Con. Mon. Up. 6"  
I.P. on N. Side



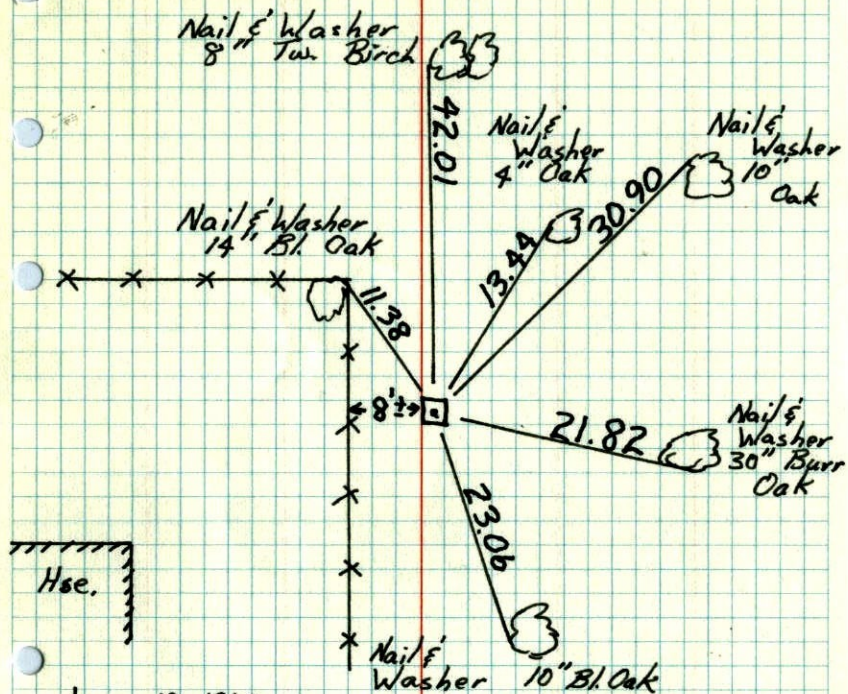
Temp. 70°

Bill & Ralph



N 1/4 Cor. Sec. 16-T32-R23

Concrete Monument  
4P 6"



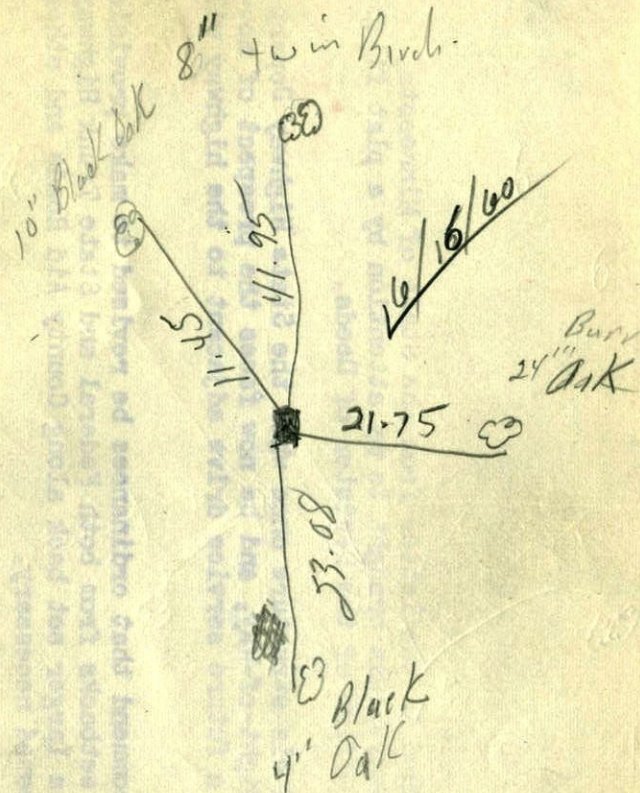
June 10, 1960

Bill Rogers  
Ralph Robinson

Tie Check  
June 14, 1971  
R. Brien  
J. Boettcher  
B. Olson

6/10/60

N 1/4 Cor. Sec. 16 + 32 R23  
Con. Mon. Up. 6"  
I.P. on N. Side



Temp. 70°

Bill or Ralph



N 1/4 Sec. 16 T32 R23 16

Cont. Mon. up 0.3'

I.P. on N. Side

Var 8° 30'

